

# **LUKAS**

Because you never get a second chance

# IT'S TIME FOR SUPERIOR EQUIPMENT.

## Rescue equipment catalogue



Cutters



Spreaders



Rescue rams



Combination  
tools and special  
equipment



Power  
units



# YOU'VE ONLY GOT ONE SHOT CHOOSE THE BEST EQUIPMENT.

With the innovative rescue tools from **LUKAS**, you can work more safely, quickly and reliably. They are a match for the latest developments in the automotive industry – today and tomorrow.



Complete sets

p. 8

Cutters

p. 14

Spreaders

p. 28

Rescue rams

p. 36

Combination tools  
and special equipment

p. 42

Power units

p. 48

Accessories

p. 60



**LUKAS** rescue equipment speeds up your rescues through **ease of use and high performance**. Its superior performance becomes clear when you most need it – on the job. With eDRAULIC, you can rescue with unbeatable speed.





## SAFE

The safety of the rescuer and the injured person always has top priority. That is why we develop high-performance products for you, which are **easy to use** and **thought through**, right down to the last detail.

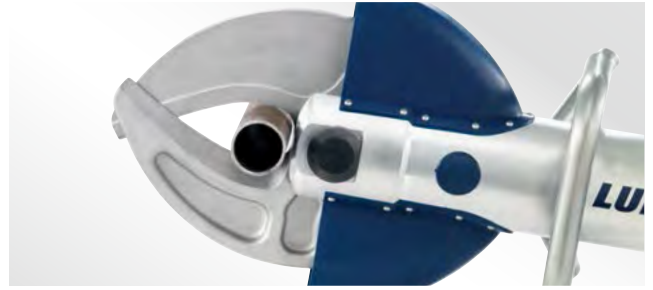
## RELIABLE

Rescue equipment must always work perfectly. In 1972 **LUKAS** was the first manufacturer to produce a hydraulic cutter and today our products are mainly **made in Germany**. **LUKAS** products are used all around the world, demonstrating their special quality every day.





You can recognise all products with this easy-to-use star grip via this symbol.



You can recognise all products with this additional performance via this symbol.

## THE STAR GRIP

Once you have used equipment with the star grip control, you will never want to use anything else. The reason for this is clear, as no other control system is so easy to use under stress, permitting work in difficult positions without having to twist your wrist.

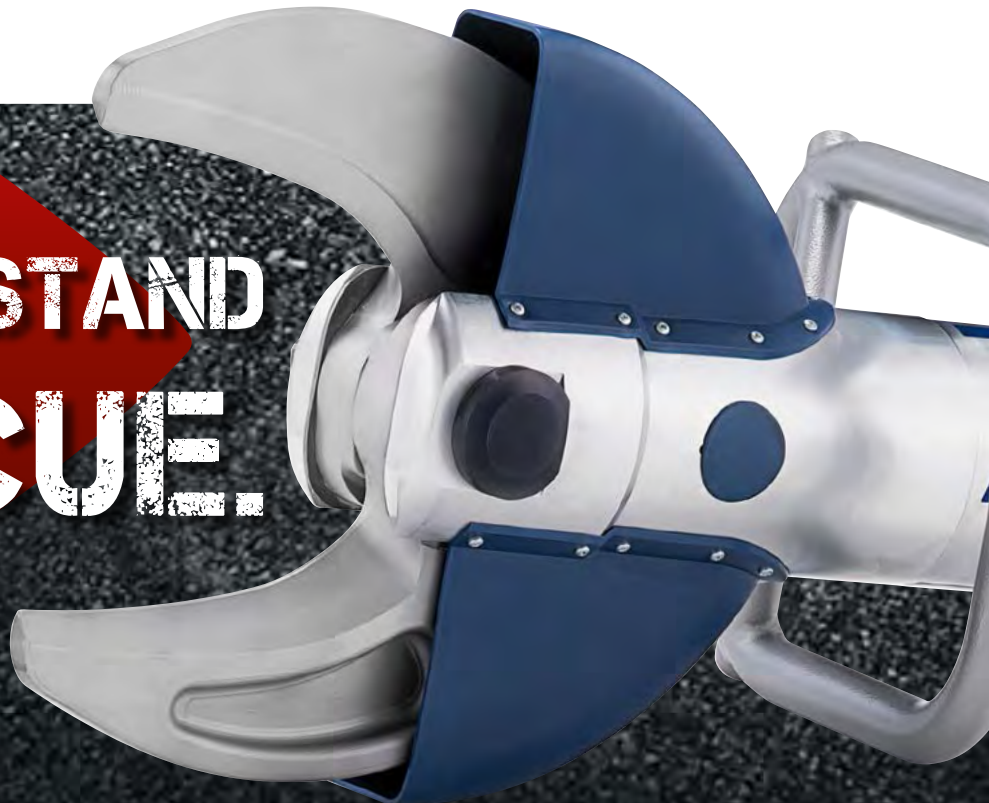
- + Permits fine control
- + Intuitive use
- + The ability to work precisely keeps rescuers and patients safe
- + For rescuers, work is less strenuous and stressful
- + Handle and control clearly separated

## CUTTER GEOMETRY

**LUKAS** cutters prove their worth in practice with their sophisticated geometry. The curved blades first close at the tips and then pull the object to be cut towards the point where the maximum force is applied. The rescue equipment positions itself correctly and provides you with optimal support when applying the tool and cutting so that you can carry out rescues quickly and safely.

- + Perfect pulling effect
- + The object to be cut is automatically positioned where the force is applied
- + Significantly reduced cutter wear
- + High reserves for future vehicle generations

**WE UNDERSTAND  
RESCUE.**







You can recognise all products with Shark-Tooth spreader tips via this symbol.



You can recognise all products with this rescue-friendly mono coupling via this symbol.

## > "SHARK TOOTH" TIPS

The "Shark Tooth" tips not only look like sharks' teeth, they pack the same bite. Their grip is as irresistible as a force of nature! This means the "Shark Tooth" tips offer the emergency services priceless help with all rescue work: spreading, cutting and pulling at the highest level.

The trick behind the monster bite: German engineering. It is the clever design of the "Shark Tooth" tips that enables their maximum performance: the 3 rows of steel shark's teeth.

- + Irresistible grip thanks to innovative 3-row arrangement of the steel teeth.
- + Get a grip on danger - no shaking off



## > MONO COUPLING

The **LUKAS** mono coupling is a well-thought-out, mature and reasonable technology to connect rescue equipment and power units. The whole system is designed to be able to carry out rescues quickly, safely and reliably.

- + Equipment can be changed quickly during operation
- + Manual pressure release is not necessary
- + Can be freely rotated by 360°
- + Highly resistant to dirt
- + Both lines can be seen and inspected at all times



You can recognise all products with this additional turbo mode via this symbol.

## > TURBO MODE

Our latest generation of P650 power units is equipped with a superior feature – the turbo mode. With a single quick movement, you can combine two oil flows for double working speed. Because in an emergency, every second counts.

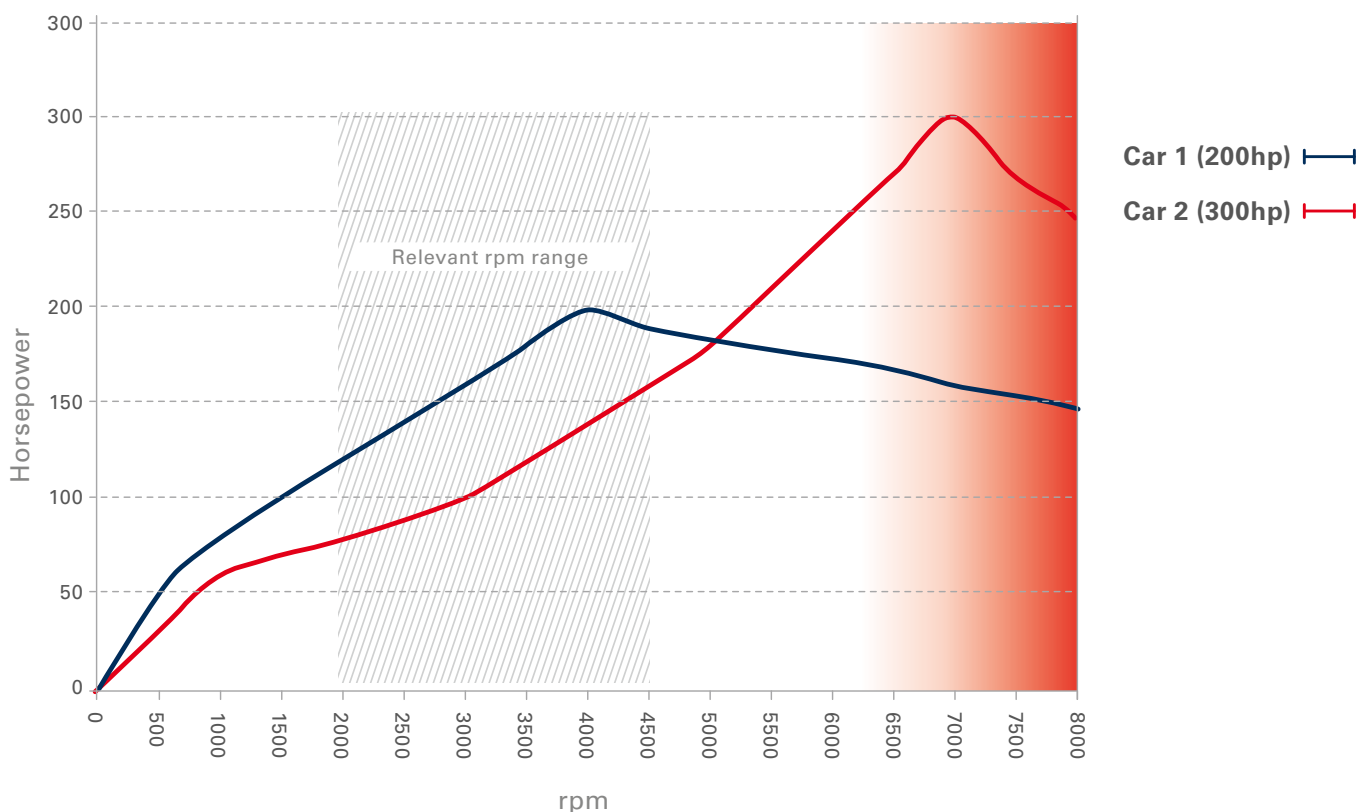


# POWER BROUGHT INTO FOCUS

## WHY HUGE POWER CLAIMS HAVE NOTHING TO DO WITH OPTIMUM RESCUE

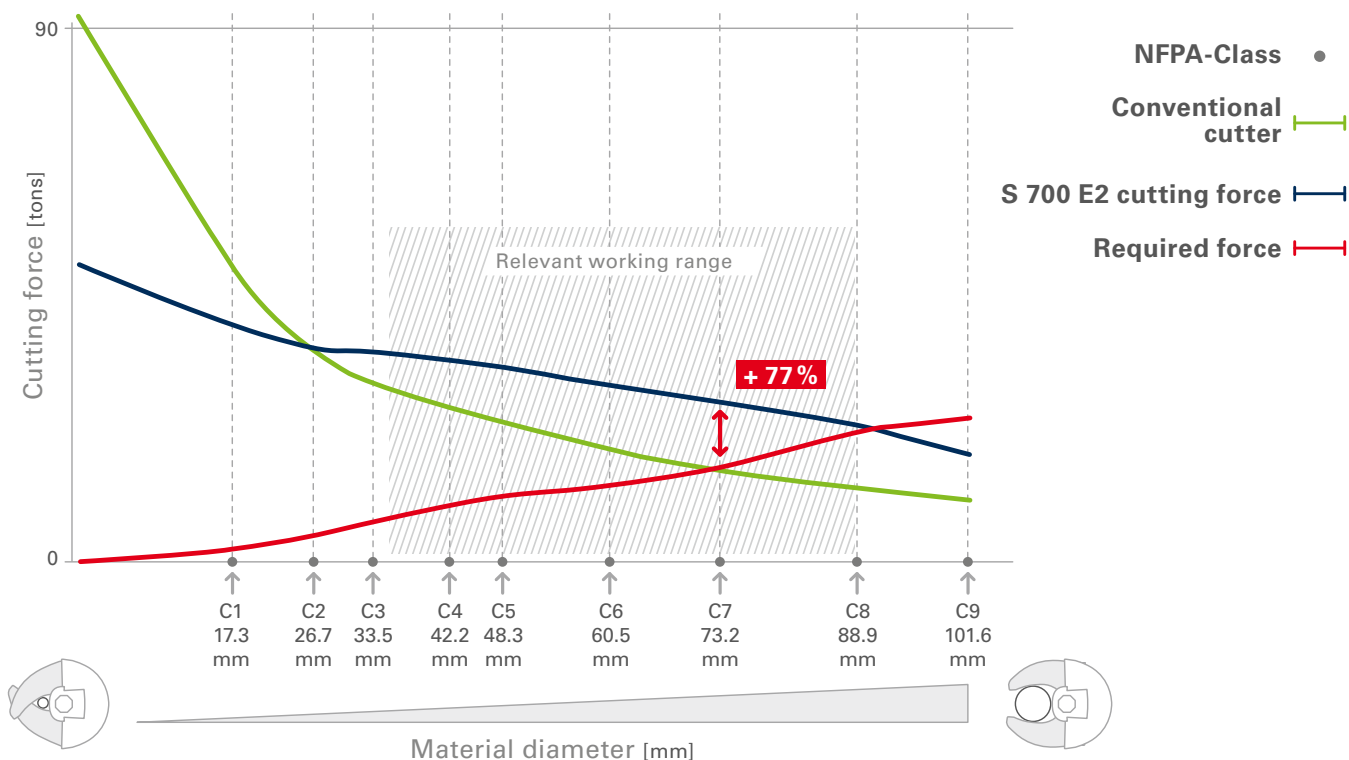
### FOR COMPARISON: HORSEPOWER CLAIMS FOR CARS

What use is 300 hp if you can only use it at 7000 rpm? Isn't the better car the one that develops maximum force in the relevant range between 2000 and 4000 rpm? Even if its maximum power is only 200 hp? Of course. And it's the same with cutting force.





## WHAT COUNTS IS THE WORKING RANGE THAT'S RELEVANT FOR VEHICLE FRAMES!



The material to be cut is compressed more and more by the blades – up to the point when cutting actually begins. This working range applies for material cross sections from around 35 to 89 mm.

But the theoretically calculated maximum cutting power only applies for a material diameter of almost zero – **completely irrelevant for real operations!**

## So you could cut a hair with maximum power – but what about the B-pillar?

The **S 700** and **S 700E2 eDRAULIC** provide up to **77% more cutting performance** exactly when it counts: when cutting vehicle frames.

**True superiority only shows in operation, not in tables.**



See a video of cutting performance in the NFPA test:  
[www.lukas.com](http://www.lukas.com)







# Whatever happens.

You can deal with it.



## Complete sets



Heavy duty kit



Vehicle extrication kit



Light rescue kit



First response kit









# Heavy-duty kit | High-performance kit



## EQUIPPED FOR THE MOST DIFFICULT RESCUE OPERATIONS.

The heavy-duty kit is the convenient rescue set with which your team can deal with even the most serious accidents. You are always on the safe side with this set, even if you are called to collisions involving trucks, buses, trams or trains.

WEBCODE: mwutqa



### Heavy-duty kit

- + S 700 high-performance cutter
- + SP 777 large spreader
- + KSV 11 set of chains
- + R 420 telescopic rescue ram
- + R 424 telescopic rescue ram
- + High-performance P 650 Simo  
including DHR 20 dual hose reel
- + Free choice between gasoline or electric motor
- + Equipment tray and carrying handles



### High-performance kit

- + S 700 high-performance cutter
- + SP 555 spreader
- + KSV 11 set of chains
- + R 420 telescopic rescue ram
- + R 424 telescopic rescue ram
- + High-performance P 650 Simo  
including DHR 20 dual hose reel
- + Free choice between gasoline or electric motor
- + Equipment tray and carrying handles





# Vehicle extrication kit



## THE KIT FOR IDEAL RESCUE FROM AN ACCIDENT.

This is the rescue set for teams which are frequently called to traffic accidents. With two rescue rams and the high-performance cutter, the vehicle extrication kit contains everything that you need. All of the tools have adequate reserves to cope with modern types of vehicles.

WEBCODE: tbasot



### The set contains:

- + S 700 high-performance cutter
- + SP555 spreader
- + R 420 telescopic rescue ram
- + R 424 telescopic rescue ram
- + High-performance P 650 Simo  
plus 2 x 32.8 ft./2 x 10 m pairs of hoses
- + Free choice between gasoline or electric motor



### In use





# Light rescue kit



## LIGHTWEIGHT AND MOBILE COMPLETE KIT.

The light rescue kit is for teams who need compact equipment as they are rarely called out to traffic accidents. With spreader and rescue cutter from the lightweight series, plus a telescopic rescue ram and power unit, the kit contains all important rescue equipment.

WEBCODE: Idusae

### The set contains:

- + S 312 cutter
- + SP333 spreader
- + P 630 SG motor pump
- + R 420 telescopic rescue ram
- + 2 pairs of extension hoses 32.8 ft./10 m long

### In use







## FOR THE FIRST MEASURES TO BE TAKEN AT THE SITE OF AN ACCIDENT.

The first response kit is intended for those vehicles which are first to arrive at a scene. It allows rescue services first access to the injured. With a lightweight combination unit and a portable power unit, it guarantees maximum mobility.

WEBCODE: byxtzs



### The set contains:

- + SC358 combination tool
- + P 600OE power unit
- + Pair of connecting hoses 16 ft./5 m long



### In use







## Cutters



S700

|

S510

|

S511

|

S530

|

S312

|

S330

|

S120





**They trust you.**

---

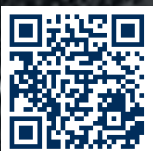
And your superior equipment.





# S 700

## THE ALPHA CUTTER.



Scan this QR code  
for further information.



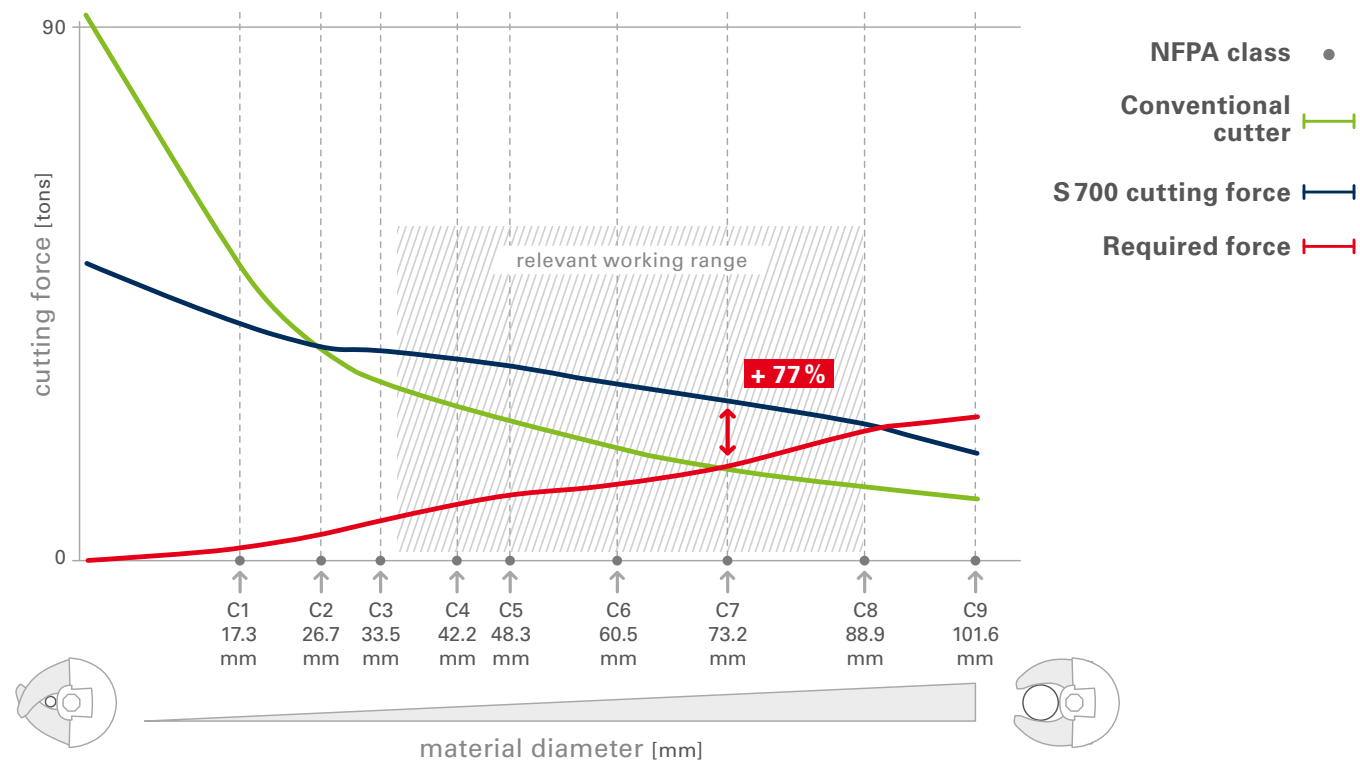


## S 700

The S700 is a completely new development, based on years of research. In the relevant range of cutting force, it markedly outperforms all previous **LUKAS** cutters.

This innovative and superior cutter gives you maximum power reserves. The perfectly matched force application and pull effect deliver ultimate performance that can overcome any vehicle geometry.

## DEVELOPED FOR REALITY.



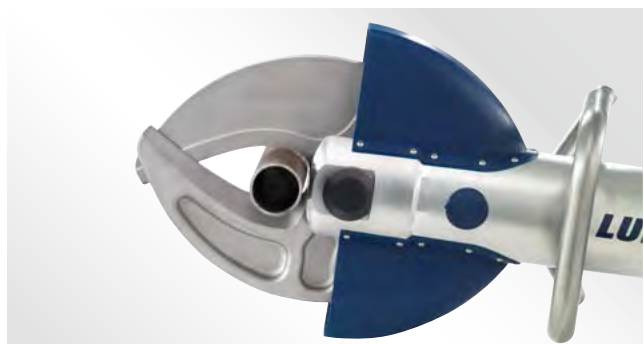
The car posts you need to cut are getting ever thicker and more stable. To ensure that you are optimally prepared, **LUKAS** no longer takes part in the race for theoretical maximum force. With the S700, we have instead developed a cutter in which blade opening and force application are perfectly matched to the relevant working range.

In comparison with our previous top cutter (S510), you can see clearly that the new S700 reaches its greatest strength earlier, delivering its best performance at large diameters.

## In use



Intuitive operation with the star grip



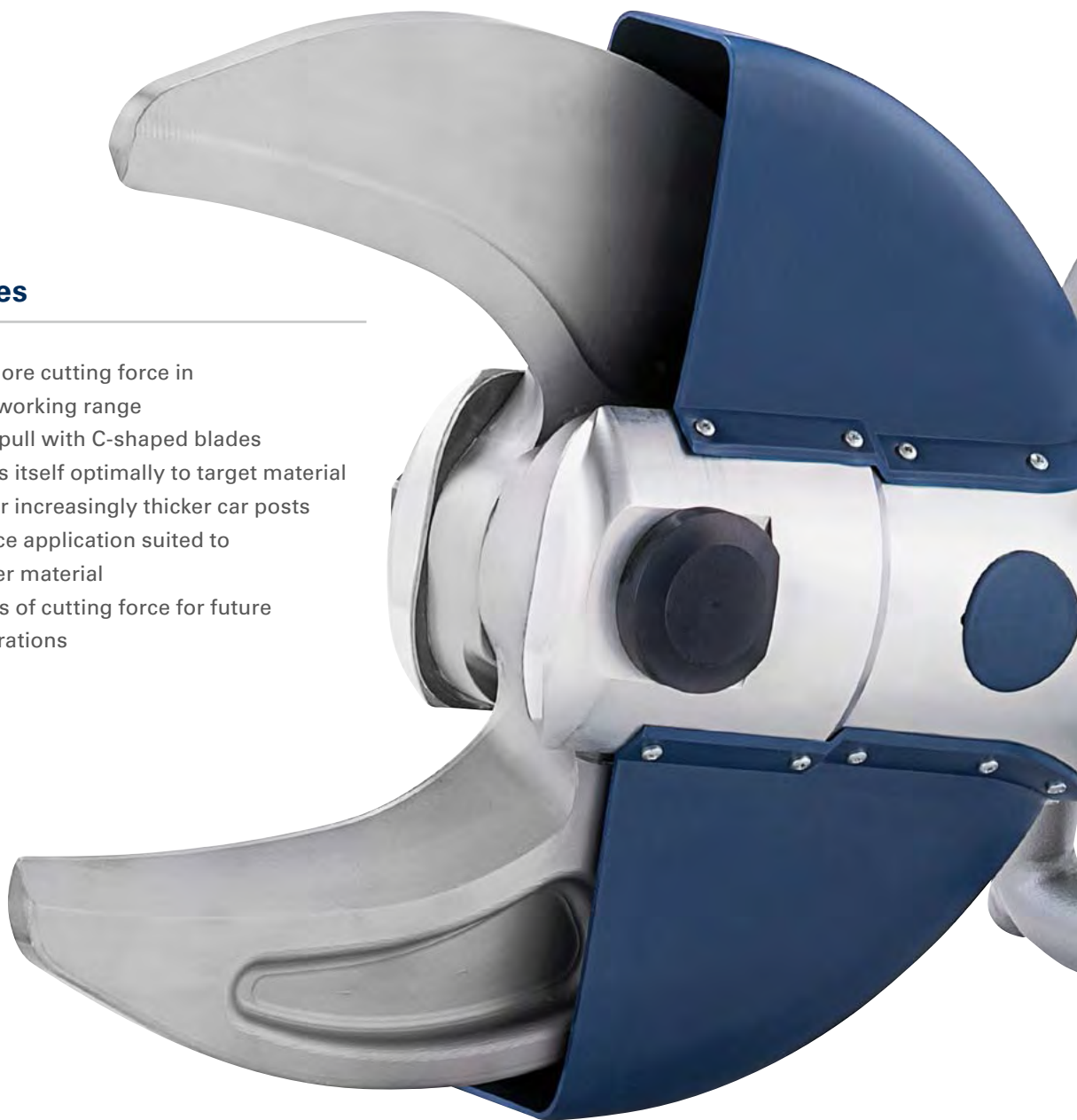
Perfect pull effect



# THE ALPHA CUTTER IN DETAIL.

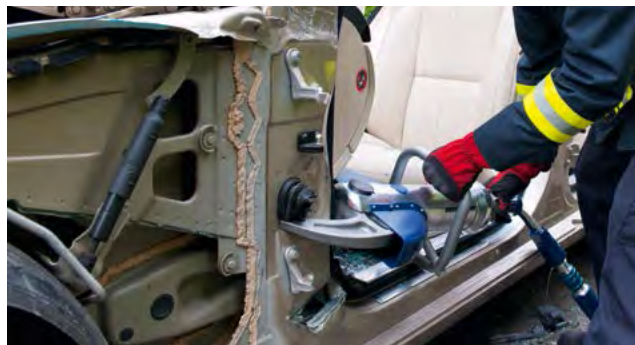
## Advantages

- + Up to 77% more cutting force in the relevant working range
- + Strong, safe pull with C-shaped blades
- + Cutter orients itself optimally to target material
- + Optimised for increasingly thicker car posts
- + Modified force application suited to cutting thicker material
- + High reserves of cutting force for future vehicle generations



## In use





Times of theoretical power specifications are over – convince yourself of true superiority in practice!



Scan this QR code for further information.

 Technical data	S 700
Blade opening	7.3 in./185 mm
Oil volume	19.9 cu. in./325 cm <sup>3</sup>
Dimensions: l x w x h	31.1 x 11.8 x 10.2 in./790 x 300 x 258 mm
Weight	46.9 lbs./21.3 kg
NFPA classes	A8/B9/C8/D9/E9
EN classification	BC 180 J-21,3
EN cutting performance	1J - 2K - 3K - 4K - 5K

WEBCODE: oplswm



# S 510

**THE ESTABLISHED  
ALL-ROUNDER.**



## > S510

With the S510 you can cut current vehicle-sections very reliable. It has a very well-balanced relationship between long cut, optimal pull effect, force and weight. Numerous firebrigades around the world already value this fully developed cutter in practice.

### > Advantages

- + Long blades with optimum pull-in effect
- + high cutting performance
- + highest reliability in use
- + robust blades with a long service life

### > In use



> Technical data	S510
Cutting force up to*	216,266 lbf./962 kN
Round steel up to ø **	1.53 in./39 mm
Blade opening	7.9 in./202 mm
Oil requirement	9.2 cu. in./150 cm <sup>3</sup>
Dimensions: l × w × h	30.6 × 9.5 × 6.7 in./776 × 240 × 170 mm
Weight	41.7 lbs./18.9 kg
NFPA classes	A8/B9/C7/D8/E9
EN classification	CC 202 I-18,9
EN cutting performance	1J - 2K - 3I - 4J - 5J

\*theoretic \*\* according to EN 13204;NFPA 1936





# S 511



## CUT WITH MAXIMUM FORCE.

The S511 is our most powerful cutter and applies maximum force to the blades. This is particularly important if you have to cut solid B columns or materials made of high-tensile or ultra-high-tensile steel.



### Advantages

- + Up to 119 tons of cutting force offer enormous reserves of performance
- + Optimum blade geometry for maximum cutting force
- + High reliability in use due to robust blades with a long service life



### In use



### Technical data

### S511

Cutting force up to*	268,422 lbf. / 1194 kN
Round steel up to Ø **	1.7 in. / 43 mm
Blade opening	6.4 in. / 162 mm
Oil requirement	9.2 cu. in. / 150 cm <sup>3</sup>
Dimensions: l x w x h	29.4 x 9.6 x 6.7 in. / 746 x 245 x 170 mm
Weight	41.3 lbs. / 18.7 kg
NFPA classes	A8/B8/C7/D8/E9
EN classification	BC 152 I-18,7
EN cutting performance	1K - 2J - 3I - 4J - 5K

\* theoretic \*\* according to EN 13204; NFPA 1936



# S 530



## THE CUTTER THAT OPENS WIDEST.

You are in the right place if you need the widest opening. By combining a very wide opening and very long, straight blades, the S 530 cutter is the right tool to cut rescue openings or access holes.

### Advantages

- + Very wide blade opening of 11.7 in./297 mm
- + High reliability in use due to robust blades with a long service life

### In use



 Technical data	S 530
Cutting force up to*	228,181 lbf./1015 kN
Round steel up to ø **	1.5 in./39 mm
Blade opening	11.7 in./297 mm
Oil requirement	9.2 cu. in./150 cm <sup>3</sup>
Dimensions: l × w × h	30.7 × 9.6 × 6.7 in./780 × 245 × 170 mm
Weight	39.9 lbs./18.1 kg
NFPA classes	A8/B7/C7/D8/E9
EN classification	CC 200 H-18
EN cutting performance	1K - 2I - 3J - 4K - 5K



# S 312

**THE NEW STANDARD  
IN THE COMPACT-CLASS.**



Scan this QR code  
for further information.





## S312

Ideal for working on cars and trucks involved in accidents: the exceptionally compact S312. It is the first rescue cutter to be certified according to the new DIN standard EN 13204: 2016 and easily achieved the top cutting class I! This makes the S312 the new top model among the range of lightweight cutters on the market, guaranteeing even more successful rescue operations.

### Advantages

- + Optimal blade geometry for more force at the right point
- + Cutting class I (certified according to new EN 13204:2016)
- + Lightweight and well-balanced design is less tiring
- + Developed for rescue operations in rail, road, airborne and marine traffic



### In use



### Technical data

#### S312

Cutting force up to*	152,900 lbf./680 kN
Round steel up to ø **	1.38 in./35 mm
Blade opening	6.3 in./160 mm
Oil requirement	6.7 cu. in./110 cm <sup>3</sup>
Dimensions: l × w × h	28.5 × 9.0 × 6.8 in./724 × 228 × 172 mm
Weight	32.0 lbs./14.5 kg
NFPA classes	A7/B8/C7/D7/E7
EN classification	BC 160 I-14,5
EN cutting performance	1I - 2I - 3I - 4J - 5J

\*theoretic \*\* according to EN 13204; NFPA 1936

WEBCODE: dnsidk





# S 330



## WIDE-OPENING LIGHTWEIGHT CUTTER.

High cutting force, wide opening and long blades are the great advantages of the S330. Its performance is always masterful, e.g. when used by factory fire brigades or across the entire field of technical assistance when emergencies occur.



### Advantages

- + Wide blade opening
- + High cutting performance
- + High reliability in use due to robust blades with a long service life
- + Lightweight and well-balanced design is less tiring



### In use



### Technical data

### S 330

Cutting force up to*	138,482 lbf./616 kN
Round steel up to ø **	1.3 in./33 mm
Blade opening	9 in./228 mm
Oil requirement	5.9 cu. in./98 cm <sup>3</sup>
Dimensions: l x w x h	32.7 x 8.3 x 6.4 in./726 x 211 x 163 mm
Weight	32.7 lbs./14.8 kg
NFPA classes	A7/B7/C7/D8/E8
EN classification	BC 175 I-14,8
EN cutting performance	1I - 2I - 3I - 4J - 5J



## MINI-CUTTER FOR USE IN TIGHT SPACES.

Handy mini-cutter with the highest cutting force in its class. It is particularly suitable for rescue work in tight spaces. For example to remove pedals, steering wheels or headrests.

### Advantages

- + Ideal for use in tight spaces
- + Very high cutting performance
- + Very lightweight due to compact construction
- + Intuitive one-hand operation

### In use



Technical data	S 120
Cutting force up to*	41,140 lbf./183 kN
Round steel up to Ø **	0.9 in./22 mm
Blade opening	2.1 in./53 mm
Oil requirement	1.04 cu. in./17 cm <sup>3</sup>
Dimensions: l × w × h	13.6 × 5.1 × 3.4 in./346 × 130 × 87 mm
Weight	9.5 lbs./4.3 kg
NFPA classes	A4/B3/C2/D3/E3
EN classification	AC 53 B-4,3
EN cutting performance	1D - 2C - 3B





## Spreaders



SP777



SP555



SP333



SP512



Accessories



**Keeping an eye on the injured.**

---

Tools for the best-possible rescue.





# SP 777

## THE NEW STANDARD IN THE HIGH PERFORMANCE CLASS.



Scan this QR code  
for further information.





Our Shooting-Stars SP333 and SP555 now have a big brother: the hose bound high performance spreader SP777. Its breathtaking spreading force of up to 600 kN, a spreading width of an incredible 813 mm and relentless "Shark Tooth" tips make it the ultimate rescue spreader for vehicle accidents (cars, trucks, buses, trains, trams) or after large-scale emergencies such as natural disasters. But that's not all: This powerhouse weighs just 19.7 kg – a whole 5 kg less than its SP510 predecessor model. This makes the SP777 the lightest BS spreader currently on the market!

## "SHARK TOOTH" TIPS

The right grip for spreading when every second counts: the design of the specially developed "Shark Tooth" tips and their arrangement in 3 rows guarantee maximum performance!



## Advantages

- + Spreading, peeling and pulling without changing tips
- + Extremely short opening and closing times for rapid and safe rescue
- + With a weight of 19.7 kg, a whole 5 kg lighter than the previous SP510 model!
- + Biting performance thanks to innovative "Shark Tooth" tips
- + Intuitive handling even under severe time pressure

## Accessories



**KSV 11 chain set**

<b>Length</b>	2 x 6.6 ft. / 2 x 2 m
---------------	-----------------------

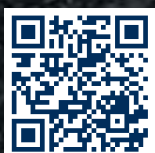
Technical data	SP777
Spreading force	14,160 - 134,900 lbf. / 63 - 600 kN
Spreading distance	32.0 in. / 813 mm
Squeezing force up to	27,400 lbf. / 122 kN
Pulling force up to	13,490 lbf. / 60 kN
Pulling distance	25.8 in. / 655 mm
Oil requirement	23.5 cu. in. / 385 cm <sup>3</sup>
Dimensions: l x w x h	35.4 x 12.2 x 7.95 in. / 898 x 309 x 202 mm
Weight	43.4 lbs. / 19.7 kg
Certification	NFPA 1936
EN classification	BS 63/813-19,7



# SP 555



**POWERFUL AND LIGHT.  
SETS THE STANDARD  
IN THE ALL-ROUNDER CLASS.**



Scan this QR code  
for further information.





The new all-rounder-class champion: This life-saver with a powerful bite offers real professionals more performance and more success stories! With a massively improved performance to weight ratio, this compact all-rounder weighs in at just 16.2 kg and puts out 13% more power! The design of the SP555 rescue spreader has also massively improved and it now shows its stubborn “Shark Tooth” tips in hazardous situations. To make the SP555 even stronger, the squeezing plates are integrated directly into its arm. In short: With this spreader, you come out the clear winner in any rescue!

## “SHARK TOOTH” TIPS

The right grip for spreading when every second counts: the design of the specially developed “Shark Tooth” tips and their arrangement in 3 rows guarantee maximum performance!



## Advantages

- + Spreading, squeezing and pulling without changing tips
- + Strong all-rounder which is up to any challenge
- + Intelligent star grip controls for safe, intuitive work
- + Lightweight and balanced to prevent fatigue

## Accessories



KSV 11 chain set

Length	2 x 6.6 ft. / 2 x 2 m
--------	-----------------------

Technical data	SP555
Spreading force	11,690 - 147,924 lbf. / 52 - 658 kN
Spreading distance	28.7 in. / 730 mm
Squeezing force up to	25,900 lbf. / 115 kN
Pulling force up to	13,039 lbf. / 58 kN
Pulling distance	22.4 in. / 569 mm
Oil requirement	14.6 cu. in. / 240 cm <sup>3</sup>
Dimensions : l x w x h	32.4 x 11.2 x 7.95 in. / 823 x 285 x 202 mm
Weight	35.7 lbs. / 16.2 kg
Certification	NFPA 1936
EN classification	AS 52/730-16,2





# SP 333



WITH „SHARK TOOTH“ TIPS



## MORE POWER, LESS WEIGHT. THE NEW COMPACT-CLASS STANDARD.

The SP333 spreader is 23% lighter and 20% stronger than its predecessor. And it even looks better too. Other benefits include the squeezing plates built into the arm and the sharp “Shark Tooth” tips with their irresistible grip. With this impressive package of benefits, the new device is perfect for all hazard situations where it comes down to high-performance spreading, squeezing and pulling with minimum weight. The SP 333 clearly sets the new standard in the compact class.



### Advantages

- + Highest spreading force in its class
- + Weight less than 13.5 kg
- + Optimum performance-to-weight ratio
- + Maximum bite thanks to innovative “Shark Tooth” tips

Technical data	SP 333
Spreading force	9,442 - 187,940 lbf. / 42 - 836 kN
Spreading distance	23.6 in. / 600 mm
Squeezing force up to	32,500 lbf. / 144 kN
Pulling force up to	12,589 lbf. / 56 kN
Pulling distance	17.3 in. / 440 mm
Oil requirement	9.15 cu. in. / 150 cm <sup>3</sup>
Dimensions: l x w x h	28.5 x 11.2 x 7.95 in. / 723 x 285 x 202 mm
Weight	29.5 lbs. / 13.4 kg
Certification	NFPA 1936
EN classification	AS 42/600-13,4

WEBCODE: mkwekn



# SP 512



Spreaders

## EXTREMELY POWERFUL SPREADER.

Nothing can stop you when you have an SP512. Its tremendous power makes it one of the strongest most formidable spreaders worldwide and perfect for the most difficult rescues on heavily deformed vehicles, truck cabins, trains or trams.

### Advantages

- + Tremendous force on the multifunction tips
- + Peel away steel walls up to approx. 0.24 in./6 mm thick
- + Spreading, peeling, squeezing and pulling without the need to change tips

### Accessories

#### KSV 13/100 chain set

Length	2 x 6.6 ft./2 x 2 m
--------	---------------------

Technical data	SP512
Spreading force	18,900 - 121,400 lbf./84 - 540 kN
Spreading distance	24 in./610 mm
Crushing force	28,700 lbf./128 kN
Pulling force up to	22,031 lbf./98 kN
Pulling distance	17.2 in./437 mm
Oil requirement	20.8 cu. in./341 cm <sup>3</sup>
Dimensions: l x w x h	31.3 x 14.9 x 8.5 in./795 x 380 x 216 mm
Weight	58.0 lbs./26.3 kg
Certification	NFPA 1936
EN classification	CS 84/610 - 26,3

WEBCODE: nwuszz





**She trusts his driving skills.**

And they both trust your equipment.

## Rescue rams



2-stage



3-stage



Standard



Accessories





# R 420 | R 422 | R 424

## COMPACT AND EXTREMELY STRONG.



Scan this QR code  
for further information.





## ➤ 2-stage telescopic rams

Rely on the strong rescue rams with a lifting force of up to 27 t. With the two-stage telescopic rescue rams, you can lift and push material out of the way which is impeding your rescue. The most powerful argument for its use is its enormous lift combined with its minimum size. They are simply indispensable when rescuing from vehicles, for accidents on railways or ships or after building collapses or natural disasters.

### ➤ Advantages

- + Rescue quickly and easily as two telescopic rescue rams replace three standard rams
- + High grip claws on the piston rod and in the base of the cylinder provide a good hold on sloping and smooth surfaces
- + Claws can be rotated 360°



### ➤ In use



### ➤ Accessories



Patented ram support  
LRS 120



Patented ram support  
LRS-C



Ram attachment set for rescue rams,  
to increase variety of applications

➤ Technical data	R 420	R 422	R 424
Total stroke	22.6 in./575 mm	27.8 in./705 mm	34.5 in./875 mm
Stroke / lifting force, piston 1	11.6 in./60,747 lbf. / 295 mm / 269 kN	15.7 in./60,747 lbf. / 365 mm / 269 kN	17.5 in./60,747 lbf. / 445 mm / 269 kN
Stroke / lifting force, piston 2	11 in./30,124 lbf. / 280 mm / 134 kN	13.4 in./30,124 lbf. / 340 mm / 134 kN	16.9 in./30,124 lbf. / 430 mm / 134 kN
Extended length	41.5 in./1055 mm	49.4 in./1255 mm	59.1 in./1500 mm
Oil requirement	86.04 cu. in. / 1410 cm <sup>3</sup>	106.2 cu. in. / 1740 cm <sup>3</sup>	130.6 cu. in. / 2140 cm <sup>3</sup>
Dimensions: l × w × h	18.8 × 4.41 × 8.7 in. / 480 × 112 × 221 mm	21.7 × 4.41 × 8.7 in. / 550 × 112 × 221 mm	24.6 × 4.41 × 8.7 in. / 625 × 112 × 221 mm
Weight	37 lbs. / 16.8 kg	41.4 lbs. / 18.8 kg	46.3 lbs. / 21.0 kg
Certification	EN 13204; NFPA 1936	EN 13204; NFPA 1936	EN 13204; NFPA 1936





## THE FIRST 3-STAGE TELESCOPIC RESCUE RAM WORLDWIDE.



**LUKAS** was the first worldwide manufacturer to have developed a 3-stage rescue ram, making rescues even quicker. With this hydraulic ram, during rescue work in road, rail and air traffic, you can move an enormous distance in a single working action – saving you valuable time.

### Advantages

- + Rescues quicker and more safely as only one working process is required with a hydraulic ram
- + Compact dimensions and low weight
- + Minimum size and maximum lift

Technical data	R 430
Total stroke	32.3 in./820 mm
Stroke piston 1	11.6 in./295 mm
Stroke piston 2	11 in./280 mm
Stroke piston 3	9.65 in./245 mm
Lifting force piston 1	60,474 lbf./269 kN
Lifting force piston 2	30,124 lbf./134 kN
Lifting force piston 3	8,768 lbf./39 kN
Extended length	51 in./1295 mm
Retracted length	18.7 in./475 mm
Oil requirement	130.6 cu. in./2140 cm <sup>3</sup>
Dimensions w x h	4.41 x 8.7 in./112 x 221 mm
Weight	39 lbs./17.7 kg

### In use



### Accessories

Patented ram support LRS 120  
Patented ram support LRS-C



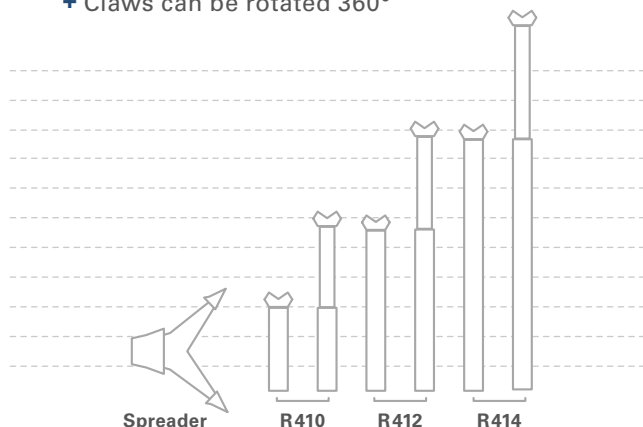
## THE STANDARD RESCUE RAMS.



The range of single-stage hydraulic rams is carefully matched in size and extended length so that there are no gaps. Each ram creates an opening into which the next largest ram can be inserted.

### Advantages

- + Minimal size for comparatively large lift
- + Claws can be rotated 360°



### Accessories



Extension 10 in. / 250 mm for R410

Ram attachment set for rescue rams,  
to increase variety of applications  
Patented ram support LRS-C  
Patented ram support LRS 120

Technical data	R 410	R 412	R 414
Piston stroke	11.8 in./300 mm	19.7 in./500 mm	27.6 in./700 mm
Lifting force	30,799 lbf/137 kN	30,799 lbf./137 kN	27,876 lbf./124 kN
Retracted length	17.7 in./450 mm	26.8 in./680 mm	35.4 in./900 mm
Extended length	29.5 in./750 mm	46.5 in./1180 mm	63 in./1600 mm
Oil requirement	29.1 cu. in./477 cm <sup>3</sup>	48.5 cu. in./795 cm <sup>3</sup>	67.7 cu. in./1110 cm <sup>3</sup>
Dimensions w x h	3.74 x 6.85 in./95 x 174 mm	3.74 x 6.85 in./95 x 174 mm	3.74 x 6.85 in./95 x 174mm
Weight	28.7 lbs/13.0 kg	39 lbs./17.9 kg	52.9 lbs./24.0 kg
Certification	EN 13204; NFPA 1936	EN 13204; NFPA 1936	EN 13204; NFPA 1936





## Combination tools and special equipment



SC 358



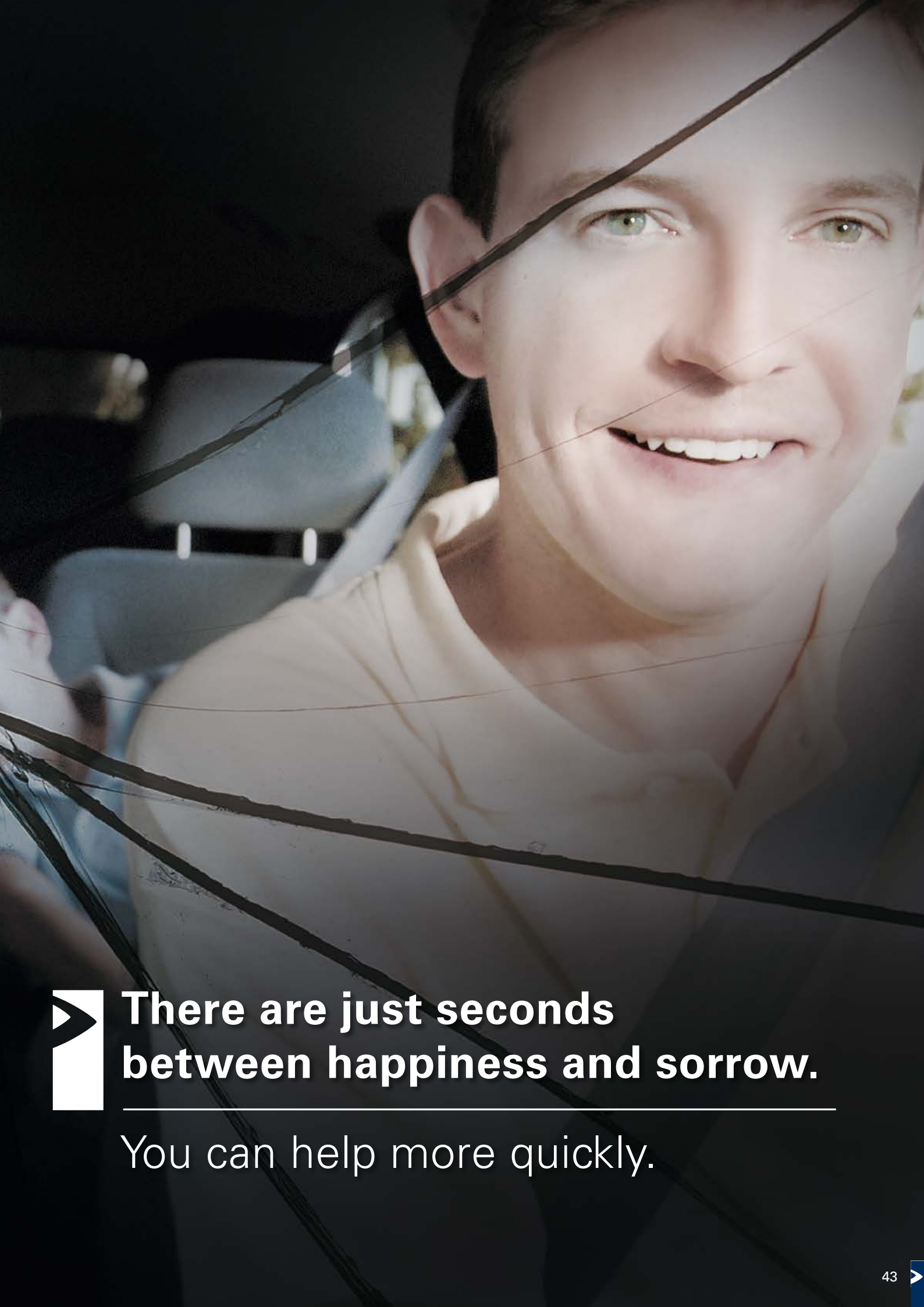
SC 557



SC 250 M



LSI 531 CC



**There are just seconds  
between happiness and sorrow.**

---

You can help more quickly.





# SC 557 | SC 358



**LIGHTWEIGHT  
AND COMPACT.**

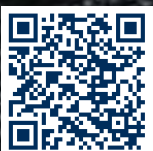


SC 358



SC 557

**THE LARGE  
UNIVERSAL TOOL.**



Scan this QR code  
for further information.





## Combination tools

Combination tools combine both spreader and cutter in a single piece of rescue equipment. Above all, they are suited for getting initial access to the injured, e.g. to ensure that medical first aid can be provided.

In addition, combination units can be used during first response, when providing assistance after an accident, when carrying out rescues in buildings and for civil protection. These compact units have astonishing forces and are very flexible in use.

## Advantages

- + Reliable cutting and spreading without the need for reconfiguration
- + Pulling possible with the quick-fit chain set (accessory)
- + Very low amount of oil required – ideal for mobile motor pumps

## Zubehör



KSV 13  
chain set  
for SC557  
  
KSV 11  
chain set  
for SC358



Adapter set  
for SC358

## In use



<div></div> Technical data	SC358	SC557
Cutting force up to*	110,600 lbf./492 kN	182,095 lbf./810 kN
Round steel up to Ø **	1.38 in./35 mm	1.49 in./38 mm
Spreading force	8,543-337,230 lbf./38-1,500 kN	9,217 - 258,520 lbf./41 - 1,150 kN
Spreading distance	14.5 in./368 mm	16.9 in./430 mm
Pulling force up to	13,714 lbf./61 kN	20,233 lbf./90 kN
Pulling distance	15 in./382 mm	12,4 in./315 mm
Oil requirement	6,7 cu. in./110 cm <sup>3</sup>	6.6 cu. in./108 cm <sup>3</sup>
Dimensions: l x w x h	30.5 x 9.0 x 6.8 in./ 774 x 228 x 172 mm	33.1 x 11.6 x 7.5 in./ 840 x 295 x 190 mm
Weight	32.6 lbs./14.8 kg	43.7 lbs./19.8 kg
NFPA classes	A7/B8/C7/D8/E7	A8/B9/C8/D9/E9
EN classification	CK 38/368 I-14,8	CK 41/430 J-19,8
EN cutting performance	1I - 2J - 3I - 4J - 5J	1J - 2K - 3K - 4K - 5K

\* theoretic    \*\* according to EN 13204; NFPA 1936



# SC 250 M




## THE COMBINATION TOOL WITH INTEGRATED HAND PUMP.

The SC250M combination tool with built-in hand pump is the affordable entry point for rescue work. It is completely self-sufficient – without power unit, hose or cable. It is instantly ready for use, it can cut and spread without modifications, and is especially suited to rescues in areas at risk of explosion (no sparks), in rough terrain and for equipping rescue helicopters or technical rescue.

### Advantages

- + Tool can be rotated through 360° – always in the optimum working position
- + Independent of external power sources
- + Light and easy to handle – fits in any car or even on motorcycles
- + Integrated hand pump with low leverage due to automatic switching from low-pressure to high-pressure range

 Technical data	SC 250 M
Cutting force up to*	58,675 lbf./261 kN
Round steel up to Ø **	1.02 in./26 mm
Spreading force up to	91,052 lbf./405 kN
Spreading distance	12.1 in./308 mm
Dimensions: l x w x h	33.5 x 7.48 x 6.22 in./ 850 x 190 x 158 mm
Weight	26.2 lbs./11,9 kg
NFPA-Classes	A6/B6/C6/D7/E7
EN-Cutting Class	F

\* theoretic    \*\* according to EN 13204; NFPA 1936

WEBCODE: mitwpt



# LSI 531 CC concrete crusher



## THE STRONG HELPER IN U.S.A.R. OPERATIONS.

The new LSI 531 CC concrete crusher clears the path for you. It is the perfect tool for operations in collapsed buildings or to free your path to trapped persons. Handy and versatile – with superior power.

### Advantages

- + Crushing and cutting with one tool
- + Dependable cutting and breaking of brickwork
- + Easy cutting of steel reinforcement
- + Little place required
- + Minimal dust formation
- + Low-noise and patientgentle rescuing

### Fields of application

- + After collapse of buildings
- + After earthquakes
- + After floods
- + After explosions
- + For U.S.A.R. operations  
(Urban Search and Rescue)
- + After natural disasters

### In use



Combination tools and  
special equipment

### Technical data

#### LSI 531 CC

Maximum opening	12.2 in./309 mm
Crushing force up to	17,984 lbf./80 kN
Cuts round steel up to	1.18 in./30 mm
Dimensions: l x w x h	31.9 x 16.7 x 12.8 in./810 x 425 x 325 mm
Weight	58 lbs./26.3 kg

WEBCODE: mnrtpa





# You will rescue her.

---

## With the right equipment.

### Power units

---



Small & light | Mobile | Mobile with turbo | High-performance | Hand pumps







## MAKES RESCUE TOOLS MOBILE.

The P600OE makes hose-connected rescue tools mobile. It gives you maximum freedom of movement in every situation because it is small, light and easy to handle, and also enables location-independent use of a rescue tool in the optional battery mode.

You have the choice: Operate your rescue tool with mains power or with a high-performance battery. The power unit has a unique energy management system that guarantees you extremely long running times.

### Advantages

- + Very patient-friendly: no exhaust fumes, very quiet
- + Small, light (under 22 lbs./10 kg), easy to use
- + Almost unlimited radius of action
- + Perfect for use at traffic pile-ups or off-road
- + Illuminated oil tank
- + Suitable for one-man operation
- + Efficient energy management in battery mode

### Accessories



Battery bag, battery charger 12-24 V/110 V/230 V, spare battery, power supply 110 V/230 V

Technical data	P 600 OE
Flow rate, low pressure – high pressure	146.5 - 27.5 cu.in./min./2.4 - 0.45 l/min.
Capacity	91.6 cu. in./1.5 l
Usable oil quantity	73.2 cu. in./1.2 l
Dimensions: l x w x h	18.1 x 7.17 x 10.1 in./460 x 182 x 257 mm
Weight*	18.3 lbs./8.3 kg

\* Weight without battery or power supply

WEBCODE: cigamx

## MOBILITY AND HIGH PERFORMANCE


The P630 OG motor pump is ideally suited for major accidents when it must be quickly moved between a number of locations. This lightweight power unit also proves its advantages in rough terrain. Their clear superiority is shown in use by its low weight and very long operating times.

All of the components are perfectly matched to one another as **LUKAS** is the only manufacturer who uses specially developed radial piston pumps. These are perfectly matched to the needs of rescue forces and we produce them ourselves. This is another reason for their superiority in use



### Vorteile

- + High mobility and easy transport
- + High flow rate for fast opening and closing of the tools
- + Sufficient oil for almost any combination of units
- + Foldable handle for easy storage

 Technical data	P 630 OG
Engine	4-stroke gasoline
Power max.	1.6 kW
Connection	1 tool
Operation	1 tool
Max. operating pressure	10,000 psi./700 bar
Flow rate low pressure	195.3 cu. in./min./3,2 l/min
Flow rate high pressure	42.7 cu. in./min./0,7 l/min
Standard oil quantity*	103.7 cu. in./1.7 l
Maximum oil quantity*	183.1 cu. in./3 l
Dimensions: l x w x h	16.5 x 12.0 x 16.1 in./420 x 304 x 408 mm
Weight	35.1 lbs./15.9 kg

\*Fill quantity = useable quantity

WEBCODE: ucietz



# P 630 SG

## MOBILE TURBO-POWER.



Scan this QR code  
for further information.





## Mobile power unit for simultaneous operation of two tools

The gasoline-powered P630SG is the perfect power unit for all operations requiring mobility.


It combines light weight and maximum power in an unique way and also features the turbo function to speed up rescues considerably, making it a friend for all helpers who need to change locations quickly.

### Advantages

- + Convenient size and light weight for high mobility
- + High flow rate for even faster work
- + Turbo function to double speed during rescue work
- + Practical carry frame for perfect all-round protection
- + Tank level is visible from outside



P630SG in turbo mode

 Technical data	P 630 SG
Engine	4- stroke gasoline
Power	2.2 kW
Connection	2 tools
Operation	2 tools
Turbo function	1 x Turbo included
Max. operating pressure	10,150 psi./700 bar
Flow rate low pressure- high pressure	2 x 183 - 2 x 42 cu. in./min./2 x 3,0 - 2 x 0,7 l/min.
Flow rate turbo low pressure- high pressure	1 x 354 - 1 x 82 cu. in./min./1 x 5,8 - 1 x 1,35 l/min.
Standard oil quantity*	134.3 cu. in./2,2 l
Maximum oil quantity*	183.1 cu. in./3,0 l
Dimensions l x w x h	19.5 x 14.2 x 17.5 in./495 x 360 x 445 mm
Weight	52.7 lbs./23,9 kg

\* Fill quantity = useable quantity

WEBCODE: jlasgt

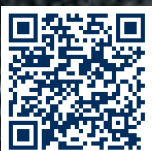


# P 650

## STRENGTH HAS NEVER BEEN SMARTER.



SIMO



Scan this QR code  
for further information.





## ➤ High-performance power units

---

Your wish was our command: the new P650 motor pump series provides what fire fighters really want. Our engineers listened very carefully to interviews with fire fighters all over the world and have developed a power unit that meets their demands even better. The P650SE has an electric motor and has been developed to operate two tools at the same time.

## ➤ CONVENIENT OPERATION!

---

- + All valves accessible from the front
- + Large and well-labelled controls
- + Optimally designed for operation with gloves
- + Tank levels visible from outside



## ➤ MORE POWER!

---

- + Running two (Simo Power) or four (4 Power) rescue tools at the same time
- + High-performance engines providing enormous power in any load range
- + Always enough power reserves

## ➤ WITH TURBO FUNCTION!

---

Rescue at twice the speed! Every second counts in rescue operations, which is why **LUKAS** has provided its P650 series with a turbo function. With one hand movement you can double the oil flow to one tool in order to work twice as fast. This feature is particularly valuable for operating rescue rams that call for a large volume of oil.



**You have a choice between the following variants:**

**Drive:** Gasoline engine (**G**), or electric motor (**E**).

**Valves:** **SIMO POWER (S)** – simultaneous operation of two rescue tools  
or **4POWER (4)** – simultaneous operation of four rescue tools



<b>Simo Power</b>	<b>P 650 SG</b> (P 650 SG - DHR 20)	<b>P 650 SE</b> (P 650 SE - DHR 20)
Engine	4-stroke gasoline	230 V electric
Connection	2 tools	2 tools
Operation	2 tools	2 tools
Turbo-Function	included	included
Power	4.2 kW	2.2 kW
Electric starter	Electric starter excluding*	-
Max. operating pressure	10,000 psi./700 bar	10,000 psi./700 bar
Flow rate, low pressure – high pressure	2 × 189 - 2 × 55 cu. in./min/ 2 × 3.1 - 2 × 0.9 l/min	2 × 156 - 2 × 43 cu. in./min/ 2 × 2.6 - 2 × 0.7 l/min
Flow rate turbo, low pressure – high pressure	1 × 369 - 1 × 103 cu. in./min/ 1 × 6.1 - 1 × 1.7 l/min	1 × 305 - 1 × 85 cu. in./min/ 1 × 5.0 - 1 × 1.32 l/min
Usable oil quantity	293 cu. in./4.8 l	293 cu. in./4,8 l
Dimensions: l × w × h	19.1 × 17.3 × 17.5 in./ 485 × 440 × 445 mm 31.9 × 17.3 × 24.7 in. (SG - DHR 20)/ 810 × 440 × 627 mm (SG - DHR 20)	19.1 × 17.3 × 17.5 in./ 485 × 440 × 445 mm 31.9 × 17.3 × 24.7 in. (SE - DHR 20)/ 810 × 440 × 627 mm (SE - DHR 20)
Weight	80.5 lbs./36.5 kg 170 lbs./77 kg (SG - DHR 20)	90.4 lbs./41 kg 179 lbs./81 kg (SE - DHR 20)
Hose length	2 × 787 in./2 × 20 m (SG - DHR 20)	2 × 787 in./2 × 20 m (SE - DHR 20)
Certification	EN 13204; NFPA 1936	EN 13204; NFPA 1936

\*optional with electric starter  
(weight: SG DHR 20: 182lbs./82.5 kg)

WEBCODE: zuwaet/olvetw (SG - DHR 20)

WEBCODE: kowqur/qmyzru (SE - DHR 20)

<b>4 Power</b>	<b>P 650 4G</b> (P 650 4G - DHR 20)	<b>P 650 4E</b> (P 650 4E - DHR 20)
Engine	4-stroke gasoline	400 V electric
Connection	4 tools	4 tools
Operation	4 tools	4 tools
Turbo-Function	2 × Turbo included	2 × Turbo included
Power	5.1 kW	3.5 kW
Electric starter*	Electric starter excluding*	-
Max. operating pressure	10,000 psi./700 bar	10,000 psi./700 bar
Flow rate, low pressure – high pressure	4 × 156 - 4 × 43 cu. in./min/ 4 × 2.6 - 4 × 0.64 l/min	4 × 134 - 4 × 37 cu. in./min/ 4 × 2.2 - 4 × 0.6 l/min
Flow rate turbo, low pressure – high pressure	2 × 305 - 2 × 85 cu. in./min/ 2 × 5.1 - 2 × 1.32 l/min	2 × 262 - 2 × 73 cu. in./min/ 2 × 4.3 - 2 × 1.2 l/min
Usable oil quantity	293 cu. in./4.8 l	293 cu. in./4.8 l
Dimensions: l × w × h	19.1 × 17.3 × 17.5 in./ 485 × 440 × 445 mm 31.9 × 17.3 × 24.7 in. (4G - DHR 20)/ 810 × 440 × 627 mm (4G - DHR 20)	19.1 × 17.3 × 17.5 in./ 485 × 440 × 445 mm 33.86 × 18.31 × 24.7 in. (4E - DHR 20)/ 810 × 465 × 627 mm (4E - DHR 20)
Weight	95.5 lbs./43.5 kg 193 lbs./87.5 kg (4G - DHR 20)	106 lbs./48 kg 201 lbs./91 kg (4G - DHR 20)
Hose length	2 × 787 in./2 × 20 m (4G - DHR 20)	2 × 787 in./2 × 20 m (4E - DHR 20)
Certification	EN 13204; NFPA 1936	EN 13204; NFPA 1936

\* optional without electric starter  
(weight: 4G 108 lbs/49 kg - 4G DHR20: 205 lbs/93 kg)

WEBCODE: mapert/bvcuqp (4G - DHR 20)

WEBCODE: knthss/whadbn (4E - DHR 20)



## 4 POWER: POWER FOR FOUR!

4 Power is the first power unit with enough hydraulic power to operate up to four rescue tools at the same time.

### Advantages

- + Four times full power
- + Ideal for multiple accidents – enabling you to work on several vehicles at once
- + No additional space needed: same small dimensions as Simo Power
- + Double turbo function: you can operate two tools in turbo mode at the same time, or one with turbo and two others in standard mode.



four tools in use



two tools in turbo mode





# Power Units with hose reels



## P 650 SE - DHR 20

### Power Unit P 650 SE with hose reels

Hose reels come with 60 ft./20 m hoses.  
Other hose lengths available upon request.  
Equipped as standard with equipment tray.



# Hand pumps


## LH2/1.8 I - PN



**Hand pumps** are an important back-up, for use in buildings, when there is a risk of explosion or if no electricity is available to drive the rescue equipment. They belong to the standard equipment for a rescue team.

## Advantages

- + Low weight, easy to use, very mobile
- + Automatic switch-over from low to high pressure for quick work

 Technical data	LH2/1.8 I - PN
Flow rate, low pressure*	1 cu. in./17 cm <sup>3</sup>
Flow rate, high pressure*	0.1 cu. in./1.55 cm <sup>3</sup>
Capacity	146.5 cu. in./2.4 l
Usable oil quantity	110 cu. in./1.8 l
Dimensions: l x w x h	25.8 x 7.9 x 6.3 in./ 655 x 200 x 160 mm
Weight	21.6 lbs./9.8 kg

\* lever stroke

WEBCODE: fgzu2t



# Hoses and hose reels



DHR




SHR


The portable single hose reel is very handy and can either remain in the vehicle or can be carried to a location closer to where it is needed.

## Advantages

- + Can be rolled out and rolled up under pressure
- + Mechanical brake for both hose reels
- + The hoses' safety factor is more than 4:1

 Technical data	DHR 20
Length	2 × 66 ft./2 × 20 m
Weight	72.5 lbs./32.9 kg

WEBCODE: uilesp

 Technical data	SHR 20
Length	66 ft./20 m
Weight	38.6 lbs./18 kg

WEBCODE: hktebu



### Extension hose pair

Luminescent extension hose pair available in 16 ft./5 m and 32,8 ft./10 m standard length.





## Accessories

---

Cutter and door opener sets | Lifting sets | Glass management

Protective equipment | Support systems | Lifting gear for heavy loads



**You can get him out.**

---

With superior equipment.







# Cutter and door opener sets

## MINI CUTTER SET

LSH4



### Cutter set for work in a tight space.

- + Cutting inside vehicles, e.g. steering wheel, gear lever and pedals
- + Cutting grill rods and other metal constructions for accidents in buildings
- + Handy and lightweight
- + Especially suitable for use when there is a risk of explosion as no sparks are produced
- + Storage and transport in a practical case

## HYDRAULIC DOOR OPENER

HTS 90



### Door opener set operated with a hand pump.

Opens metal doors with multiple locks or fire-security doors, accidents or police work in buildings.

## DOOR OPENER AND MINI CUTTER SET

HTS90 | LSH4



### Two sets in one.

Both of the above described sets in a transport case with a hand pump and a connection hose.

Technical data	LSH4	HTS90	HTS90   LSH4
Cutting force	16,800 lbf./75 kN	-	16.800 lbf./75 kN
Spreading force	-	20.000 lbf./90 kN	20.000 lbf./90 kN
Stroke	-	4 in./100 mm	4 in./100 mm
Blade opening	1.6 in./40 mm	-	1.6 in./40 mm
Set weight	20 lbs./8.8 kg	28 lbs./12.8 kg	38 lbs./17.1 kg
Dimensions Box: l x w x h	15.8 x 12.2 x 7.5 in./ 400 x 310 x 190 mm	15.8 x 12.2 x 7.5 in./ 400 x 310 x 190 mm	15.8 x 12.2 x 7.5 in./ 400 x 310 x 190 mm

WEBCODE: upqzet

WEBCODE: gonatz

WEBCODE: dpwiesz



# Lifting sets

## DIN LIFTING SETS TO LIFT AND SUPPORT.

H1



H2



Lifting sets are an important part of your equipment for lifting and stabilising loads.

Technical data	H1	H2
Hand pump with connecting hose	2 x	1 x
Hydraulic ram	2 x LKZ 15/150	2 x LKZ 15/150
Hydraulic ram	2 x LKZ 15/50	-
Two-way distribution valve with 2 x 16 ft hose	1 x	1 x
Base plate	2 x	2 x
Base lifter	2 x	2 x
Wedges	2 x	2 x
Extensions	2 x	2 x
Storage boxes	2 pcs. 23.6 x 15.7 x 8.7 in. / 2 pcs. 600 x 400 x 220 mm	1 pc. 23.6 x 15.7 x 8.7 in. / 1 pc. 600 x 400 x 220 mm
Lifting force	38,500 lbf. / 150 kN	38,500 lbf. / 150 kN
Operating pressure	700 bar	700 bar
Total weight	117.8 lbs. / 53.4 kg	78.3 lbs. / 35.5 kg

WEBCODE: wirzqp

WEBCODE: mskort





# Glass management



LES 18

## RESCUE SAW FOR LAMINATED GLASS, METAL AND WOOD.


Rescue saws are indispensable to quickly remove panes of laminated glass. The LES 18 also cuts metal, wood and plastic and is thus perfectly suited for work at traffic accidents, in buildings, on rough ground or on turntable ladders.

### Application

- + To expose side impact protection for the use of hydraulic cutters
- + To cut through steering wheels
- + To cut through plastic bodywork and plastic parts
- + To remove obstructions made of metal or plastic

### In use



 Technical data	LES 18
Strokes per min	0 - 3,000
Stroke length	1.125 in./28.6 mm
Li-Ion Battery	18 V, 4 Ah
Dimensions case: l x w x h	19.7 x 14.4 x 5.3 in./ 500 x 365 x 135 mm
Weight	9 lbs./4.1 kg

WEBCODE: plauwz

The saws come packed in a practical case with charger and replacement saw blades.



# Glass management



**Glass management set**

**WSC 1**



**Splinter guard**



**Spring-loaded punch**



## The convenient glass management set in a bag.

For the safety of both injured persons and rescue workers and as well for creating supply- and support openings – the convenient glass management set in a bag.

### Content:

- + bonding sheet 500 mm, approx. 100 m
- + unwinder with adhesive tape
- + Handsaw WSC1
- + ResQme®-spring-loaded punch with beltcutter
- + Carpeting remover
- + Marker
- + 3 pcs. dust mask
- + Measuring tape 3 mv

WEBCODE: olwzqm



## Handsaw for laminated glass.

This handsaw cuts and removes glued, laminated panes of glass such as those used in all modern cars, trucks and buses.

WEBCODE: pqizsw



## Protects the injured from glass splinters.

The **LUKAS** splinter guard reliably protects accident victims from glass splinters and is thus an indispensable part of a careful rescue. Depending on the accident scenario and the state of the injured person, it can be used with a transparent window or with a completely closed surface.

WEBCODE: oxvzsw



## To smash safety glass.

With the spring-loaded punch you can shatter panes made of safety glass such as the side windows of cars and trucks.

WEBCODE: laquev





# Protective equipment



Air Bag Safes for cars and trucks



**RELIABLE PROTECTION  
FROM LATE DEPLOYING  
AIR BAGS.**

Passenger  
Air Bag Safe



For maximum protection for accident victims and rescuers. **LUKAS** Air Bag Safes protect both driver and passenger side from late-deploying air bags. Stored in a practical case (driver side) or in a nylon bag (passenger).

WEBCODE: iqrtzw



## Advantages

- + Can be fixed before and after cutting out the windscreen and removing the roof
- + Can be used both for left-hand and right-hand drive vehicles
- + The system can be quickly fitted



## In use





# Protective equipment

## Protection covers



## Protecting the rescuers.

This is how to effectively protect your rescue team from injuries on sharp edges with little effort. The protective bags are put on the cut-off ends of the vehicle columns and are securely fixed with Velcro tape. The protective sheets are used everywhere on the bodywork to cover up sharp edges, e.g. on fender or in the roof area, and are fixed via sewn-in magnets.

With one set, one side of a vehicle and, if necessary, a dangerous roof edge can be covered over. To completely cover both sides, a second set of protective sheeting is required.

WEBCODE: nxbeur

## In use



## Tool station



## Staying organized

A multifunctional sheet made of tear-proof, waterproof and dirt-repellent material. Among other uses, during a rescue they are used as a central place to keep tools, providing a clear overview and increasing safety.

WEBCODE: rebnla



# Protective equipment

**PREVENTS CRASHED  
TRUCK CABS  
FROM MOVING.**



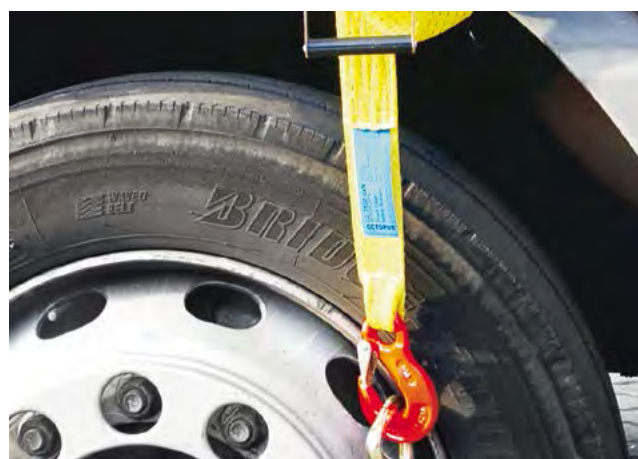
**Truck driver's cab safety set**

 **In use**



As the suspension of modern trucks' driver cabs often has a negative effect on the state of the injured, rescuers have to minimise the cab's movements. To do that, **LUKAS** provides a special cab safety kit which can be universally used. It is hooked in on both sides to the holes in the wheel rims and is then tightened with a ratchet or is fixed with a loop around the front axle.

**WEBCODE: Imqusz**





# Rescue platform

---



**FOR RESCUE  
WORK ON TRUCKS,  
TRAINS, AIRCRAFTS  
AND BUILDINGS.**

## Rescue platform LRP

This rescue platform made of aluminium is for all rescue work requiring elevated access. Stable, lightweight and robust design with non-slip steps and a platform made of aluminium profile.

WEBCODE: bxjeow

## Advantages

---

- + Lightweight, robust design made of aluminium
- + Platform height adjustable from 40-60 in./0.8-1.4m
- + Extension pieces on all four legs to compensate for height differences in rough terrain
- + Can be folded up to save space and for ease of transportation
- + The platform stands securely on non-slip feet





# Support systems

**STABILISES ACCIDENT  
VEHICLES IN EVERY POSITION.**



**LQS strut set**



For more safety the struts are applied diagonally at an angle of 25° to 35°, they are attached to the vehicle bodywork with hooks and are jacked up with a ratchet. It is very quick and easy to manually adjust their length. The complete set consists of two props (adjustable from 48 to 78.7 in./1.22 m to 2 m) in a carrying bag.

**WEBCODE: xneirp**



## In use





# Support systems

**Set 1**



**Support block**



**Step chock  
+ support block**

**Set 2**



**Step chock  
with keg**

**LUKAS** supports serve to safely stabilise vehicles and support loads during rescue work. They prevent dangerous movements of accident vehicles which may become unstable when cutters and spreaders are used.

WEBCODE: xbuewp

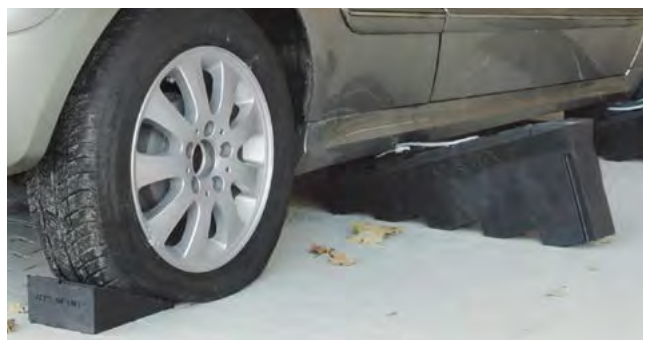


## Advantages

- + Blocks and wedges can be stacked up to the height needed
- + Stands securely as stacked blocks interlock with one another
- + Resistant to oil, chemicals and the usual cleaning agents and solvents
- + Made of environmentally friendly, recyclable plastic (polyethylene)
- + Very robust, long service life and shatterproof
- + Permissible load up to 242 lb/110 kg/sq cm



## In use







## HYDRAULIC LIFT AND RESCUE.



**MSM-2D**  
mobile control module  
for two heavy lifting rams

One motor pump, two applications. If loads have to be lifted during a rescue as well as using cutters, spreaders and rescue rams, then the patented MSM-2D allows two heavy lifting rams to be connected to the power unit. For example, this may be to lift trams, underground trains, trucks, buses or trains involved in accidents. Heavy lifting gear is also used during rescues in collapsed buildings.

WEBCODE: xqopsa



### Advantages

- + Quickly ready to use
- + Lower procurement costs
- + Easy to use
- + Small and handy



### In use



# Lifting heavy loads



## Telescopic rescue ram

The original **LUKAS** telescopic cylinders are made of a high-strength light alloy, making them light, corrosion-resistant and low-maintenance. Due to their design, they offer very long total stroke at a low retracted height. Please use a power unit from the P 650 series for the heavy-duty lifting set.

Technical data	HP 10 I T 280 R	HP 16 T 160 R	HP 25 I T 185 R
Max. piston force 1/2/3	146,133.9/67,670/23,381 lbf./ 650/301/104 kN	192,671/93,525/37,095 lbf./ 875/416/165 kN	146,133/67,670 lbf./ 650/301 kN
Stroke piston 1/2/3	3.7/3.74/3.54 in./ 94/95/90 mm	1.97/2.01/2.4 in./ 50/51/61 mm	3.74/3.54 in./ 95/90 mm
Total stroke	10.0 in./279 mm	6.4 in./162 mm	7.3 in./185 mm
Retracted height	8.5 in./215 mm	6.7 in./169 mm	8.5 in./215 mm
Oil requirement	85.4 cu. in./1.4 l	67.1 cu. in./1.1 l	79.3 cu. in./1.3 l
Weight	32.6 lbs./14.8 kg	34 lbs./15.4 kg	32.6 lbs./14.8 kg

WEBCODE: uezsdh



## Set of stacking plates

If there is only sufficient space under a load for smaller telescopic rescue rams, then you can use stacking plates to add about 6 in./150 mm of height.

Technical data	Stacking Set
Fork lever, quantity	1
Stacking ring, quantity/height	4/2.6 in./4/65 mm
Piston plate, quantity/height	3/2.6 in./3/65 mm + 1/1.8 in./1/45 mm
Max. stroke extension	9.4 in./240 mm
Weight	32 lbs./14.5 kg

WEBCODE: myiwql

## Hydraulic hoses

Special pairs of hoses with quick stop prevent heavy loads from sinking down, if for example, hoses are damaged.

## Base plates

The base plates extend the base for the hydraulic rams, thus adding stability in use. These are recommended for all lifting work.



In 1972 **LUKAS** was the first supplier to develop a hydraulic cutter for rescue work, laying the foundation stone for an entire branch of business.

Since 1948 **LUKAS** has produced hydraulic products for a wide range of applications. Today, you can benefit from these years of experience.



# 40 YEARS OF SUPERIOR

## A PART OF THE INTERNATIONAL IDEX CORPORATION.

**LUKAS** Hydraulik GmbH is part of the international IDEX Corporation which invests in successful medium-sized companies in highly specialised markets worldwide. All companies which belong to the group have two things in common: strong technical orientation and innovative strength.

In addition to **LUKAS**, the IDEX Rescue group includes some of the strongest brands from the field of fire and rescue services such as HURST – JAWS OF LIFE, the American rescue cutter manufacturer, and VETTER, the emergency pneumatics specialist.

As our customer, you will benefit from our international practical knowledge and the intensive transfer of skills and know-how within the corporate group which contributes to the development of sophisticated and high-performing products. Make them your first choice – because you never get a second chance!





1998



today

# RESCUE TOOLS.

## ► INNOVATION FOR RESCUERS.

**LUKAS** is traditionally innovative and is always looking for ways to make its rescue tools even more powerful and user-friendly. Equipment that is small and lightweight and as powerful and convenient as possible. The latest proof is the eDRAULIC technology, with which **LUKAS** has opened a new chapter in rescue technology and laid the foundation for new revolutions. Our 40 years of experience in the development and production of hydraulic rescue tools, and the experience from more than 50,000 cutters sold and used in more than 190 countries worldwide, demonstrate superiority in rescue every day.

## ► OUR COMMITMENT: MADE IN GERMANY.

**LUKAS** mainly produces its equipment in Germany. That does not just mean final assembly, it means full manufacture. Our highly motivated and passionate team in Erlangen-Eltersdorf produces tools that save lives.

## ► THE SYNONYM OF QUALITY AROUND THE WORLD.

Progressive technologies, the most modern, tough materials and proven reliability have made **LUKAS** the most respected supplier around the globe.







Our products are impressive in practice.

## Ask for a demonstration.

**LUKAS Hydraulik GmbH**  
A Unit of IDEX Corporation

Weinstraße 39  
91058 Erlangen  
Germany

Fon: +49 9131 698-0  
Fax: +49 9131 698-394  
E-Mail: [lukas.info@idexcorp.com](mailto:lukas.info@idexcorp.com)

**[www.lukas.com](http://www.lukas.com)**